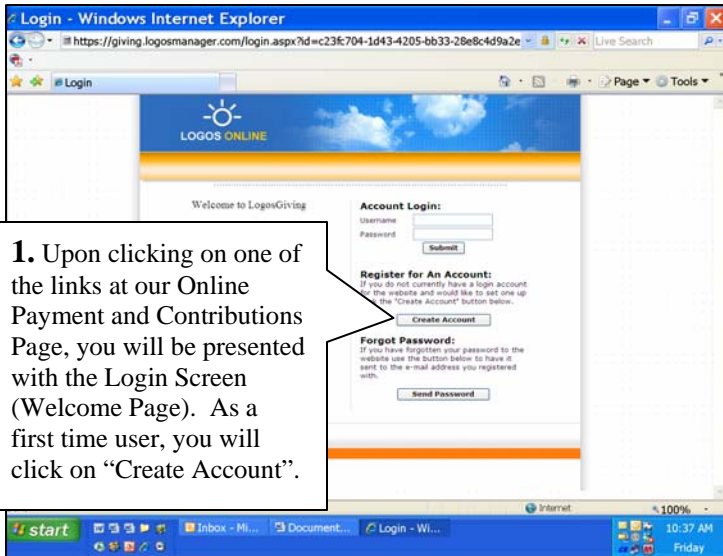
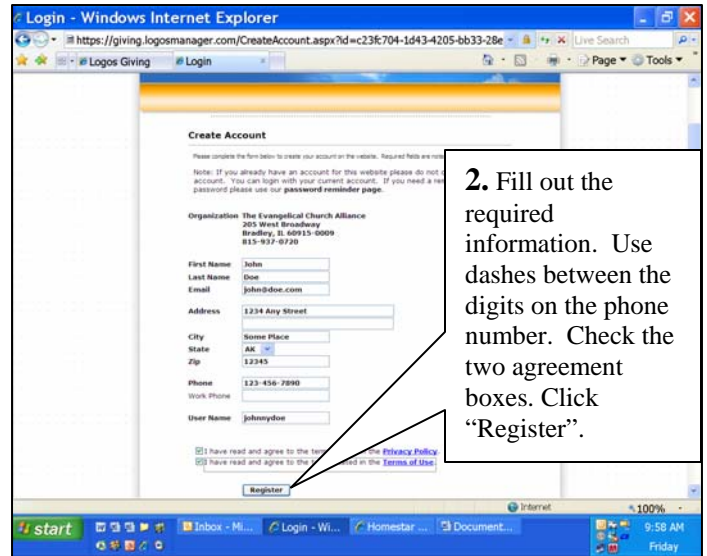


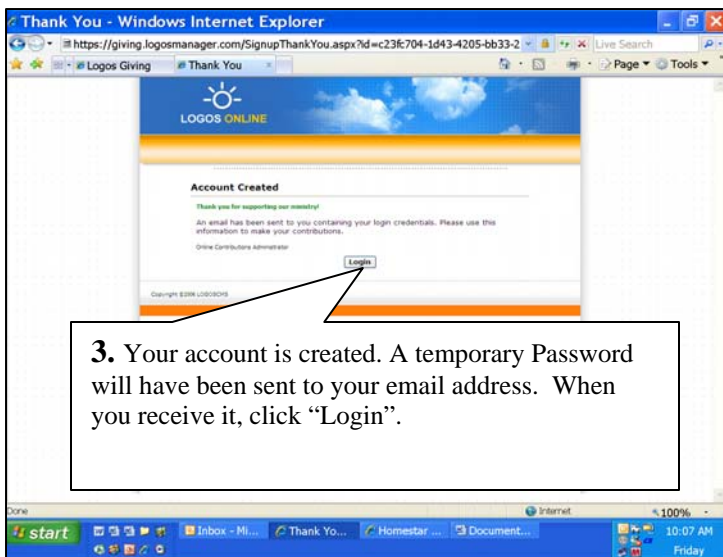
10 Steps to ECA's Online Payment Program



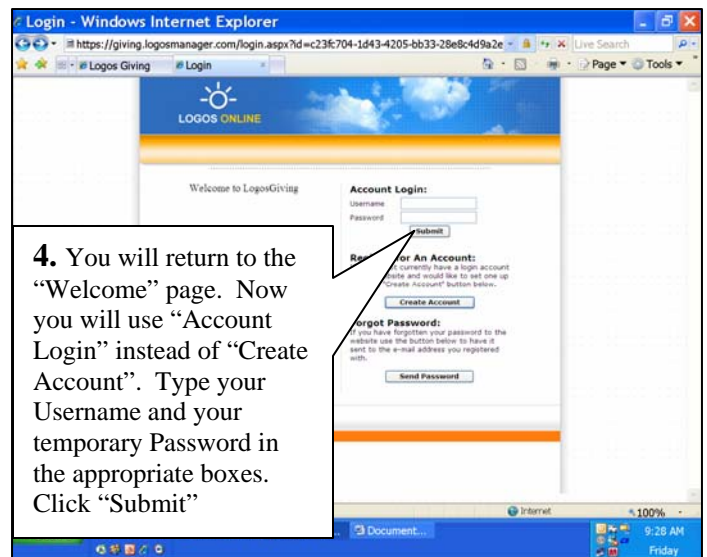
1. Upon clicking on one of the links at our Online Payment and Contributions Page, you will be presented with the Login Screen (Welcome Page). As a first time user, you will click on "Create Account".



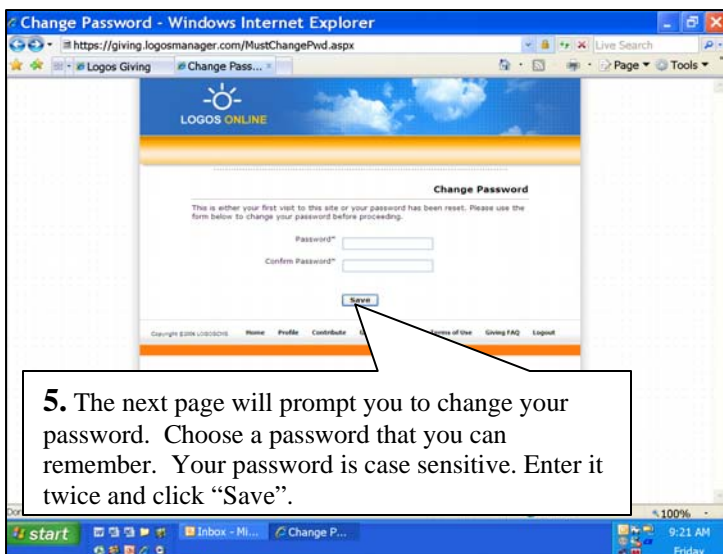
2. Fill out the required information. Use dashes between the digits on the phone number. Check the two agreement boxes. Click "Register".



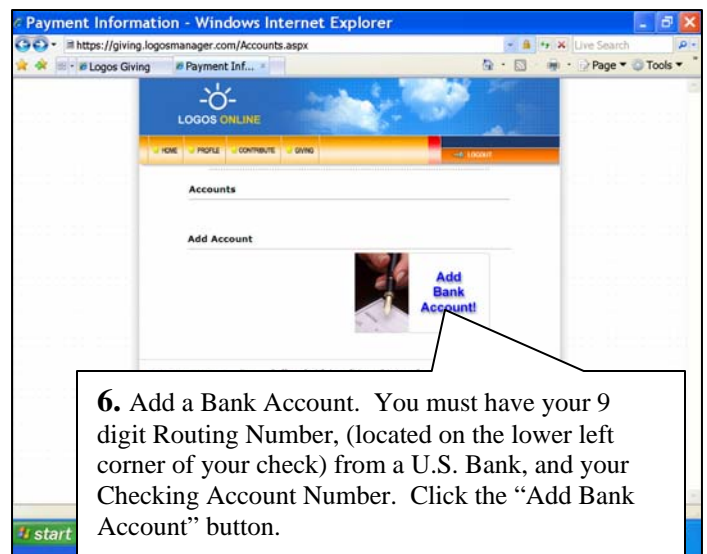
3. Your account is created. A temporary Password will have been sent to your email address. When you receive it, click "Login".



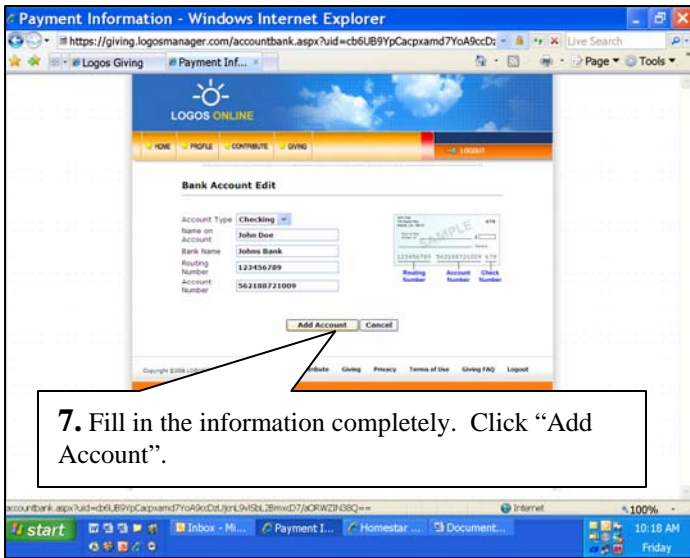
4. You will return to the "Welcome" page. Now you will use "Account Login" instead of "Create Account". Type your Username and your temporary Password in the appropriate boxes. Click "Submit"



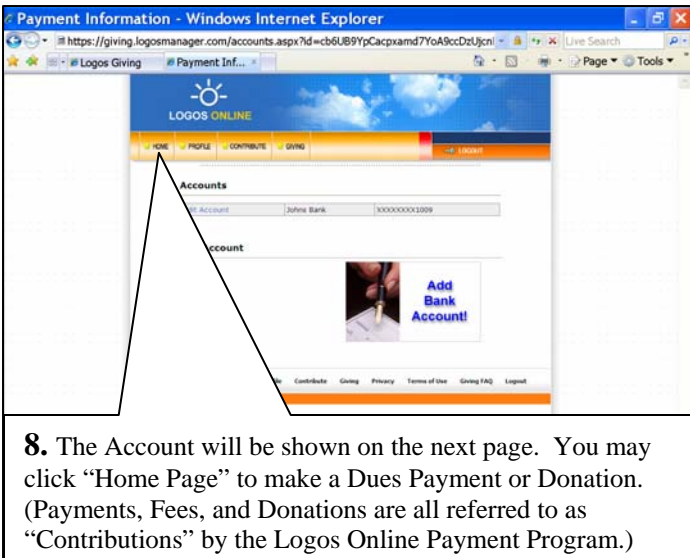
5. The next page will prompt you to change your password. Choose a password that you can remember. Your password is case sensitive. Enter it twice and click "Save".



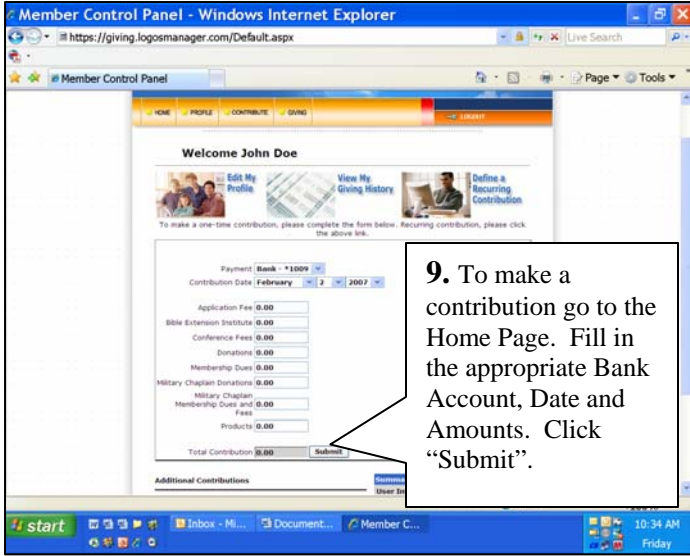
6. Add a Bank Account. You must have your 9 digit Routing Number, (located on the lower left corner of your check) from a U.S. Bank, and your Checking Account Number. Click the "Add Bank Account" button.



7. Fill in the information completely. Click “Add Account”.



8. The Account will be shown on the next page. You may click “Home Page” to make a Dues Payment or Donation. (Payments, Fees, and Donations are all referred to as “Contributions” by the Logos Online Payment Program.)



9. To make a contribution go to the Home Page. Fill in the appropriate Bank Account, Date and Amounts. Click “Submit”.

10. The Final page will allow you to verify the transaction. Once you have done so click “Complete Contribution” at the bottom of the page. If you have any questions, you may contact the ECA by calling 1-888-855-6060, or Emailing info@ecainternational.org; Monday-Friday, 8:30 AM-4:30 PM Central Time.